
Comfort-Aire®

Century®

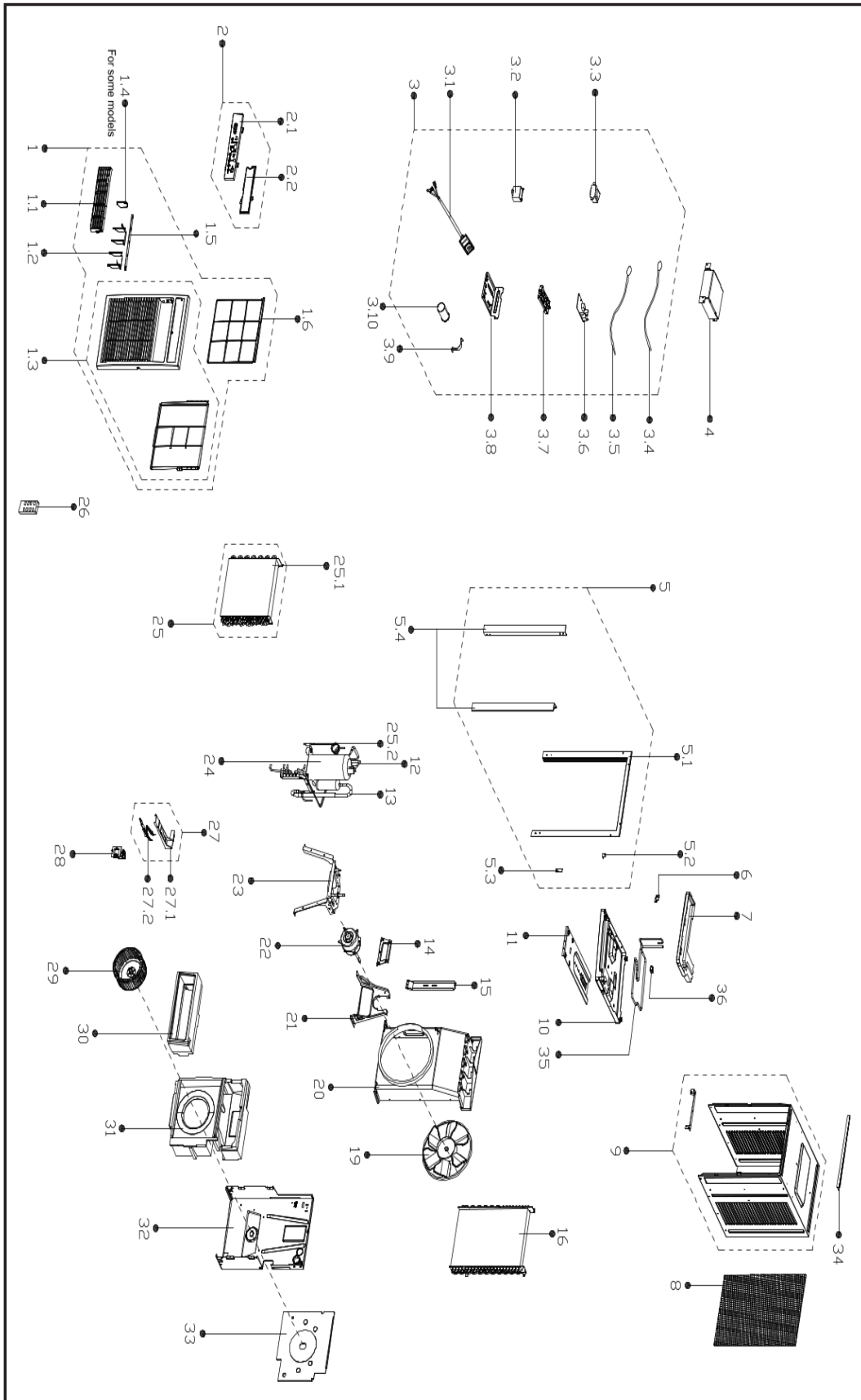


REPLACEMENT PARTS LIST

Room Air Casement

CD-101R01

EXPLODED VIEW



REPLACEMENT PARTS

Location	Part Name	Quantity	Part No.
1	panel subassembly	1	12120300005264
1.1	Air outlet frame	1	12120300004588
1.2	Horizontal louver	4	12120300004590
1.3	panel subassembly	1	12120300004546
1.5	Connecting rod of louver	1	12120300004591
1.6	Air filter	1	12120300004584
2	Display box subassembly	1	17220300A23909
2.1	Control panel	1	12120300004604
2.2	Cover of control panel	1	12120300004632
3	Electronic control box subassembly	1	17220300005610
3.1	American Standard Power Cord	1	17401202006809
3.2	Capacitor of fan motor	1	17400101A00464
3.3	Linear Transformer	1	11203103002539
3.4	Pipe Temperature Sensor	1	11201007003444
3.5	Room Temperature Sensor	1	11201007003440
3.6	Main control board subassembly	1	17120300004488
3.7	Bracket of Main Control Board	1	12120300003724
3.8	Electronic control box subassembly	1	12220300005398
3.9	Capacitor clip	1	12200203000007
3.10	Capacitor of compressor	1	17400103000364
4	Electronic control box cover subassembly	1	12220300005442
5	Installation accessory	1	12020300001027
5.1	Top shutter frame subassembly	1	12120300004844
5.2	Fixing plate	1	12220300003862
5.3	Fixing board	1	12220300003863
5.4	Side shutter frame	2	12220300003865
6	Fixing plate	1	12220300000531
7	Condenser water tray	1	12820300000027
8	Rear net	1	12120300000929
9	Cabinet	1	12220300003719
10	Chassis Assembly	1	12220300003727
11	Installation board	1	12220300003721
12	Discharge pipe assembly	1	15120300007302
13	Suction pipe assembly	1	15120300001346
14	Cover of motor	1	12220300000445
15	Supporting board	1	12220300003731
16	Condenser Assembly	1	15820300003822
19	Axial flow fan	1	12100105000012
20	Rear barrier board subassembly	1	12120300005372
21	Supporter of fan motor	1	12220300001107
22	Single Phase Asynchronous Motor	1	11002012001843
23	Bracket of compressor assembly	1	12220300001106
24	Fixed Speed Rotary Compressor	1	11103010014611
25	Evaporator assembly	1	15820300003682
25.1	Evaporator	1	15820300002640
25.2	Capillary subassembly	1	15120300007064
26	Remote controller	1	17317000A59734
27	Fresh air door subassembly	1	12120300005047
27.1	Bracket of fresh air door	1	12120300004609
27.2	Connecting rod of fresh air door	1	12120300004623
28	Fresh air door	1	12120300000231
29	centrifuge fan	1	12100103000167
30	Volute shell (above)	1	12820300000100
32	Front separating board subassembly	1	12220300005441
34	Top shutter frame subassembly	1	12120300004637
35	Cooling coil assembly	1	15120300002832
36	Fix clamp	3	12120300004635

Due to ongoing product improvements, specifications and dimensions are subject to change and correction without notice or incurring obligations. Determining the application and suitability for use of any product is the responsibility of the installer. Additionally, the installer is responsible for verifying dimensional data on the actual product prior to beginning any installation preparations.

Incentive and rebate programs have precise requirements as to product performance and certification. All products meet applicable regulations in effect on date of manufacture; however, certifications are not necessarily granted for the life of a product. Therefore, it is the responsibility of the applicant to determine whether a specific model qualifies for these incentive/rebate programs.

Comfort-Cire®  **Century**®

1900 Wellworth Ave., Jackson, MI 49203 • Ph. 517-787-2100 • www.marsdelivers.com

